

# 維多利亞著名的葡萄酒產區 | 亞拉河谷 Yarra Valley

3夜[出發日期: 2022年10月1日至2023年1月31日] | 3 Nights [Travel Period: 01Oct2022-31Jan2023]



✓ 國泰航空來回經濟客位機票  
Round trip economy class air  
ticket on CX

✓ 亞拉河谷葡萄酒莊一日遊  
Vinetrekker Day Tour at  
Yarra Valley with lunch

✓ 3晚墨爾本酒店住宿  
3 nights hotel  
accommodation



從墨爾本驅車不到一小時，便可到達蜿蜒的亞拉河谷(Yarra Valley)裡，葡萄架井然有序地排列著，酒窖門已敞開迎賓，優質的葡萄酒和精美的當地特產美食已擺在桌上。

維多利亞最早的葡萄酒莊就建在亞拉河谷，它因此也被譽為世界著名的葡萄酒產地之一。許多葡萄酒莊提供酒窖品酒和賣酒，有些還自設餐廳，為客人準備精美的食物和上等的當地特產，然後佐以自製美酒。

Mandatory credit: Visit Victoria



1人成行 GV1

有關套票的條款及細則請參閱最後一頁

Page 1 of 4

Tour Code : CXMELWINE01

Ref No. : 40823

PCH/19JUN22/300

WESTMINSTER  
Travel Ltd.  
西敏旅行社



Westminster Travel Limited (A member of CTM, listed on the ASX)

☎ 2313 9800

✉ itravel@hkwtl.com

🌐 leisure.westminstertravel.com

Licence No. 350488



# 維多利亞著名的葡萄酒產區 | 亞拉河谷 Yarra Valley

3夜[出發日期: 2022年10月1日至2023年1月31日] | 3 Nights [Travel Period: 01Oct2022-31Jan2023]



## 亞拉河谷葡萄酒莊一日遊 Vinetrekker Day Tour at Yarra Valley with lunch

包括德保利家族(The De Bortoli)的葡萄酒莊位於壯麗的大分水嶺(Great Dividing Range)山腳下，是亞拉河谷最古老酒莊之一。德保利葡萄酒莊的葡萄酒與眾不同、別具特色。

Departing from the Melbourne Town Hall, enjoy a relaxing day in the rolling green hills of the Yarra Valley showcasing a wide range of wine accompanied by perfectly paired foods. Take a moment to meet your friendly guide who is local, long-lived Melbournians who will share her knowledge and provide relevant information for you to get the most out of your Yarra Valley experience.

### De Bortoli Wine Flight with Cheese

First stop is De Bortoli Winery at Dixons Creek. As the region's largest producer, it's a great start to the experience with a pairing of wines and cheeses.

### Yering Station Vineyard Lunch & Tasting

Yering Station's stunning Wine Bar Restaurant, with its world-class views and cuisine, enjoy an a la carte main course meal. You'll also visit the original winery that features local artworks and produce to taste their estate and reserve wines.

### Payten & Jones Winery Tasting

One of the smaller producers in the Yarra Valley, Behn Payten and Troy Jones produce small batch, approachable wines with personality. Along with the familiar chardonnay and pinot noir, their range has been expanded to include Italian and Spanish varietals.

### Coldstream Hills Vineyard Tasting

Established by James Halliday, one of Australia's leading authors and commentators on wine, Coldstream Hills' wines are beautifully crafted and have enjoyed success at numerous wine shows, especially the chardonnay and pinot noir. The stop here includes a tasting and explanation of the wines.

### Medhurst Vineyard Tasting

This family-owned vineyard of 35 acres that was established in 1999 has a delightful elevation in the foothills of the Warramate Ranges and produces a small selection of elegant table wines. Enjoy another tasting of their wonderful wines together with olives, local cheese and biscuits.



1人成行 GV1

有關套票的條款及細則請參閱最後一頁

Page 2 of 4

Tour Code : CXMELWINE01

Ref No. : 40823

PCH/19JUN22/300



Westminster Travel Limited (A member of CTM, listed on the ASX)

☎ 2313 9800

✉ itravel@hkwtl.com

🌐 leisure.westminstertravel.com

Licence No. 350488



# 維多利亞著名的葡萄酒產區 | 亞拉河谷 Yarra Valley

3夜[出發日期: 2022年10月1日至2023年1月31日] | 3 Nights [Travel Period: 01Oct2022-31Jan2023]



## 新開業 墨爾本酒店

### Holiday Inn Express Melbourne Little Collins

[www.ihg.com/holidayinnexpress/hotels/us/en/melbourne/melhc/hoteldetail?](http://www.ihg.com/holidayinnexpress/hotels/us/en/melbourne/melhc/hoteldetail?)

#### Standard Room

Bed Type: Queen/Twin Beds  
續住每晚: HK\$1520+ | 包早餐

成人佔半房 (每位) **\$8,520+**



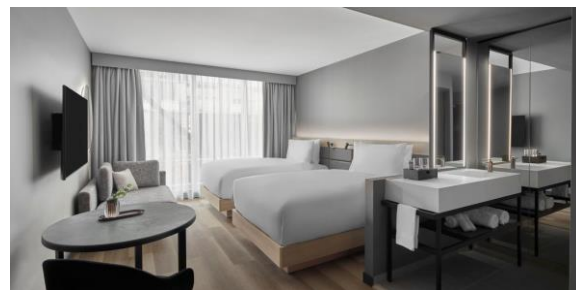
### AC Hotel Melbourne Southbank

[www.marriott.com/en-us/hotels/melac-ac-hotel-melbourne-southbank](http://www.marriott.com/en-us/hotels/melac-ac-hotel-melbourne-southbank)

#### Deluxe Room

Bed Type: King/Twin Beds  
續住每晚: HK\$1620+ | 不包早餐

成人佔半房 (每位) **\$8,670+**



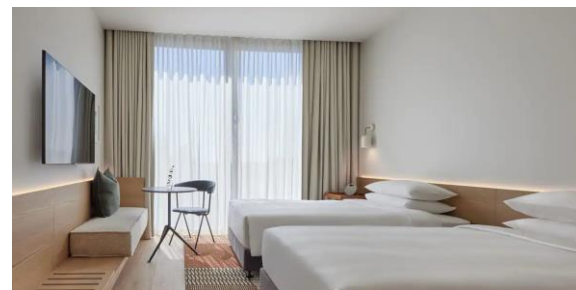
### Hyatt Centric Melbourne

[www.hyatt.com/en-US/hotel/australia/hyatt-centric-melbourne/melct](http://www.hyatt.com/en-US/hotel/australia/hyatt-centric-melbourne/melct)

#### Hotel Room

Bed Type: King/Twin Beds  
續住每晚: HK\$1920+ | 不包早餐

成人佔半房 (每位) **\$9,120+**



※ 套票以淡季價格計算，於旺季、週末及假期前夕或大型節日期間出發，需另付附加費。詳情向本社職員查詢作準



1人成行 GV1

有關套票的條款及細則請參閱最後一頁

Page 3 of 4

Tour Code : CXMELWINE01

Ref No. : 40823

PCH/19JUN22/300



Westminster Travel Limited (A member of CTM, listed on the ASX)

☎ 2313 9800

✉ itravel@hkwtl.com

🌐 leisure.westminstertravel.com

Licence No. 350488



# 維多利亞著名的葡萄酒產區 | 亞拉河谷 Yarra Valley

3夜[出發日期：2022年10月1日至2023年1月31日] | 3 Nights [Travel Period : 01Oct2022-31Jan2023]



Mandatory credit: Visit Victoria

## 國泰航空墨爾本機票附加費表

### CX Melbourne Airfare Surcharge

出發日期: 2022年10月1日- 2023年1月31日

Travel Period : 01Oct2022-31Jan2023

1 人成行 GV1			
Departure	Adult	Booking class	Ticket validity
		International	
01Oct22-31Jan23	---	N	Max. 3 months
	\$900	S	
	\$2350	V	
<i>Domestic fare are subject to change, please refer to GDS fare for detail</i>			

#### Price Includes :

- Round trip economy class air ticket between Hong Kong and Melbourne on CX
- Vinetrekker Day Tour at Yarra Valley with lunch
- 3 nights Melbourne hotel accommodation
- HK\$100,000 Travel Insurance [Zurich Insurance (Hong Kong) 24-hour emergency hotline+852-2886-3977]
- & 0.15% TIC Levy

#### Terms & Conditions :

- Package price is per person ( in HK\$ ) and valid between **01Oct2022-31Jan2023**; and hotel stay must be completed by 31Jan
- Booking class : N Ticket validity : Max.3 months
- International flights valid on CX only
- Twin room is based on 2 single beds or 1 double bed
- Airport tax, HK security charge & fuel surcharge(if any) are not included
- A non-refundable deposit of HK\$1000 per person required upon reservation
- Full payment must be made after confirmation with no refund
- Upon confirmation, any amendment is subject to company's discretion
- All prices and conditions are subject to change without prior notice
- Check whether the Security Bureau has issued any [Outbound Travel Alert](#) for your destination before firming up your travel plan to ensure personal safety
- A service fee of HK\$30 will be collected for each ticket issued

#### 費用包括：

- 國泰航空來回香港與墨爾本經濟客位機票
- 亞拉河谷葡萄酒莊一日遊
- 3晚墨爾本酒店住宿
- HK\$100,000旅遊保險(蘇黎世保險(香港) 24小時緊急支援服務+852-2886-3977)
- 0.15% 旅遊業賠償基金

#### 條款及細則：

- 以上套票價錢以每成人計算，有效日期為2022年10月1日至2023年1月31日；酒店入住必須於1月31日或之前完成
- 訂位代號：N 機票有效期：最長3個月
- 國際航班只適用於CX航班
- 雙人房之房種為2張單人床或1張雙人床
- 費用包括費用並未包括兩地機場稅、香港機場保安稅及燃油附加費(如適用)
- 訂位時須繳交訂金港幣每位\$1000
- 餘款需於機票及酒店確認後繳付及恕不退還
- 於機票及酒店確認後，如需更改本公司擁有最終決定權
- 所有費用如有更改，恕不另行通知
- 為確保自身安全，旅客在落實行程前，應留意保安局有沒有對目的地發出**外遊警示**
- 每發出機票乙張，收取港幣\$30服務費



1 人成行 GV1

Page 4 of 4

Tour Code : CXMELWINE01

Ref No. : 40823

PCH/19JUN22/300



Westminster Travel Limited (A member of CTM, listed on the ASX)

2313 9800

itravel@hkwtl.com

leisure.westminstertravel.com

Licence No. 350488